

OR 62 Corridor Plan

Advisory Committee Meeting #1 | Thursday, June 26, 2025

 **KITTELSON**
& ASSOCIATES

Photo Credit: ODOT Flickr Account



Agenda

1

Project Overview

- Background
- Purpose / Study Area
- Scope / Schedule

2

Introductions

- Name
- Agency
- Role
- Corridor Observations

3

Team Roles & Responsibilities

- Advisory Committee (AC)

4

Technical Memos

- TM #1 (Plans & Policies Review)
- TM #3 (Environmental Features & Land Uses)

5

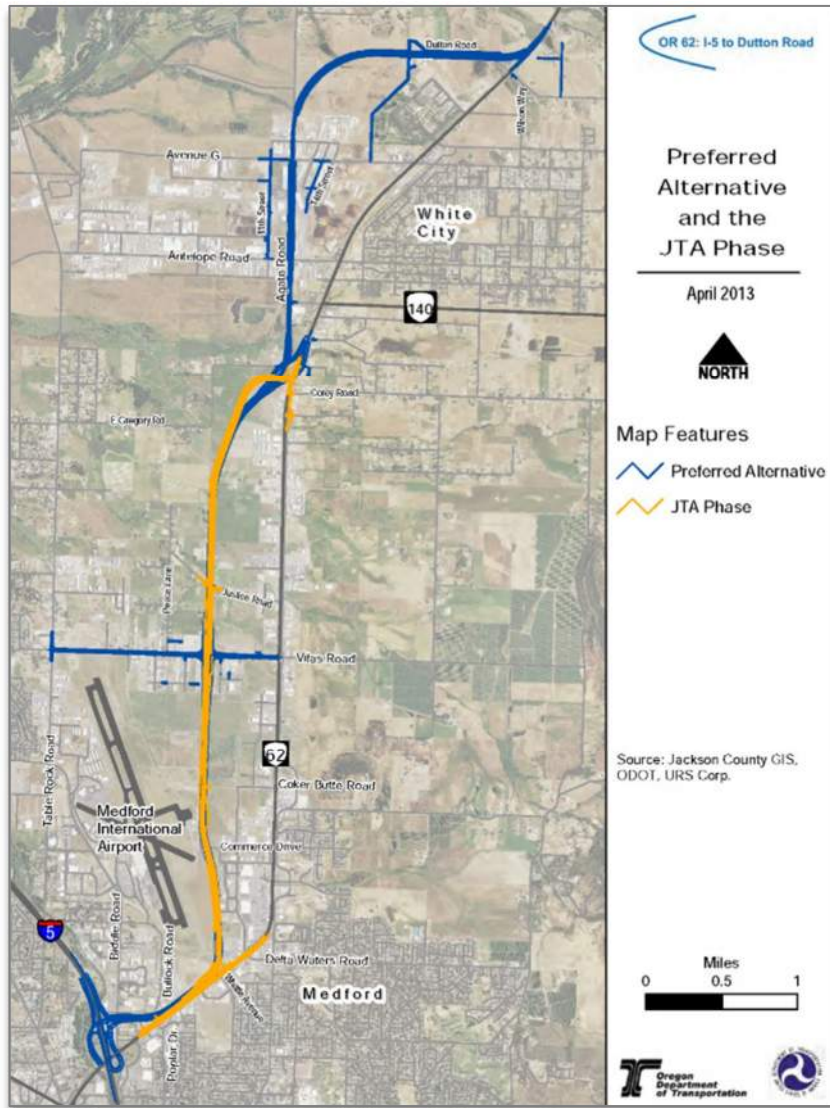
Next Steps & Open Discussion

- AC Review Comments
- Existing Conditions Analysis
- AC Meeting #2

Project Overview

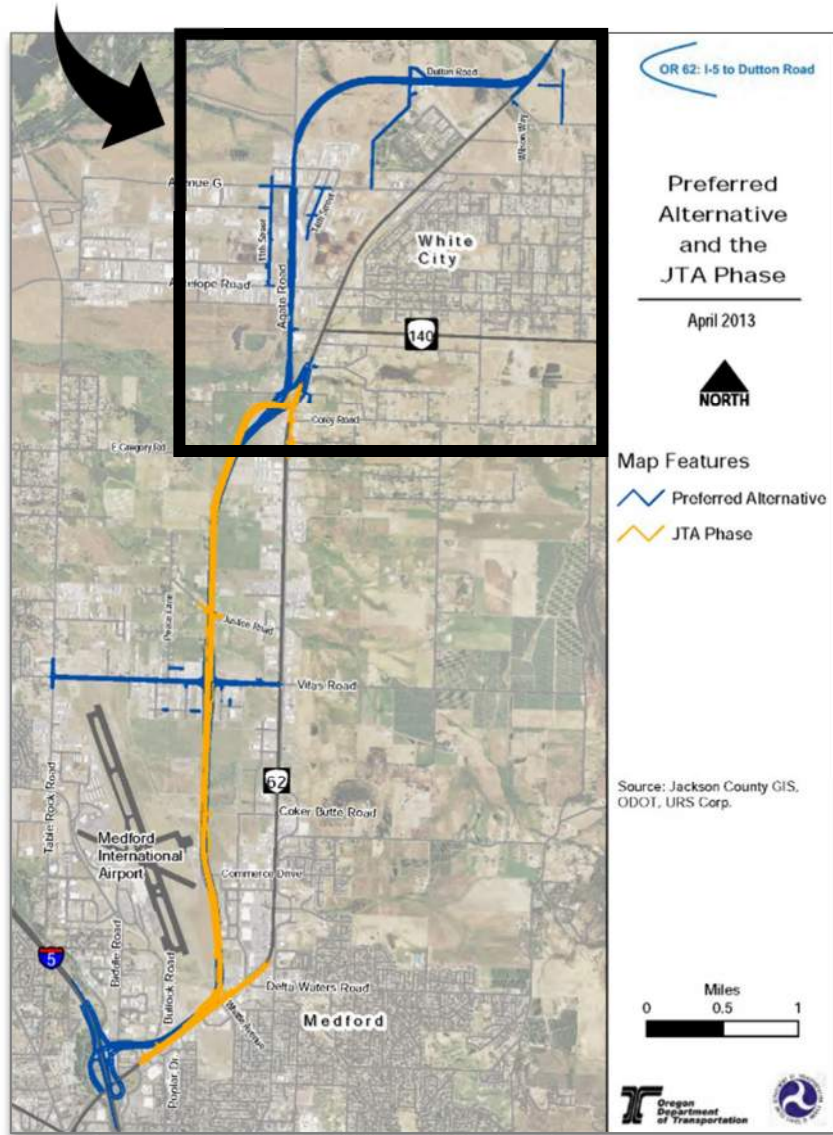
Background | Purpose & Study Area | Alternative Evaluation | Scope & Schedule

Project Background



- **Full expressway alignment** determined by 2013 Final Environmental Impact Statement (FEIS) / Record of Decision (ROD)
- **Partial construction completed** in 2019, funded by Jobs and Transportation Act ("JTA Phase")
- Interchange Area Management Plans (IAMPs) completed at Vilas Rd and at I-5 Exit 30
 - No interchange at Vilas Rd
 - Split Diamond interchange at I-5

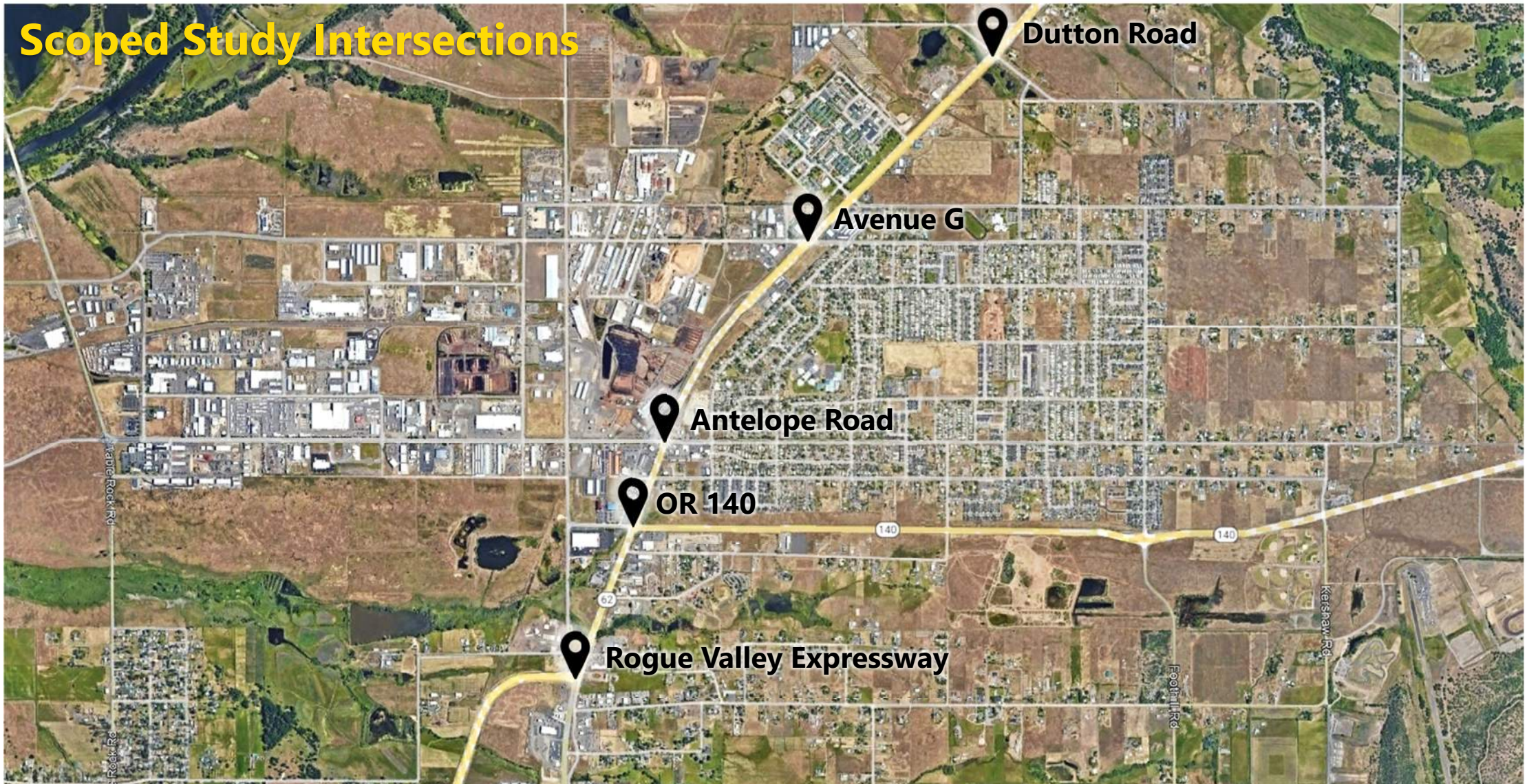
Project Purpose & Study Area



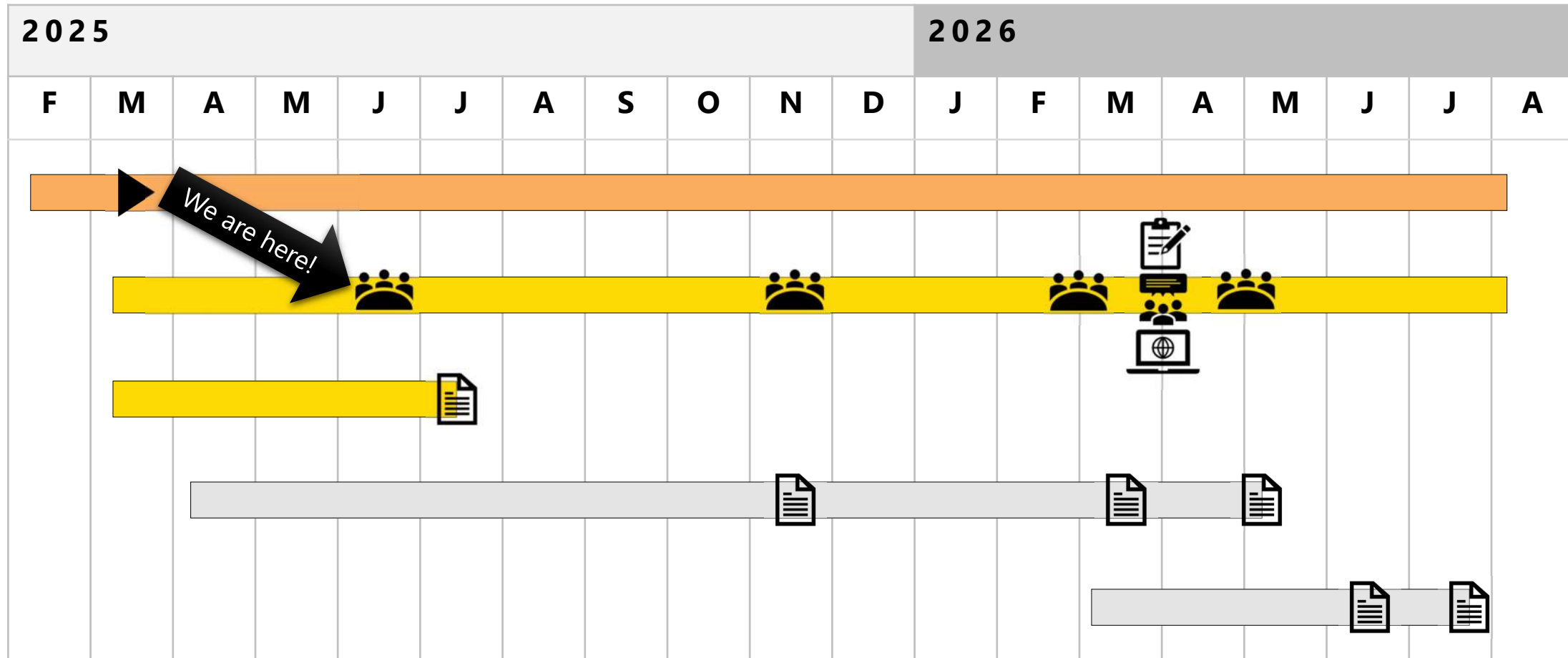
Examine need, feasibility, and benefit of constructing northern terminus (Corey Road to Dutton Road)

- Identify existing / future deficiencies using updated information
- Determine if northern alignment is still preferred
- If not preferred, identify alternative solutions to maintain corridor safety / operations

Project Purpose & Study Area



Project Scope & Schedule



Kick-Off
 AC Meetings
 Final Deliverables
 Constituent Interviews
 Targeted Outreach
 Online Open House

Introductions

Name | Agency | Role | Corridor Observations

Observations

- What is working/not working?
- What is on your wish list?



Team Roles & Responsibilities

Advisory Committee

Advisory Committee

- Review draft documents prior to AC meetings;
- Attend AC meetings;
- Provide written comments to ODOT after each meeting;
- Participate in online open house (optional but encouraged)

Technical Memos

TM #1: Plans & Policies Review | TM #3: Environmental Features & Land Uses

TM #1: Plans & Policies Review



Outlines the policy and regulatory framework for transportation planning in the study area



Reviews relevant adopted policy and regulatory requirements at the state, regional, and local level



Identifies projects that should be considered in this planning effort

TM #1: Plans & Policies Review

- Reviewed 19 state plans, 3 regional plans, and 7 local plans
- Key plans that identify projects within study area:

2024-2027 ODOT Statewide Transportation Improvement Program

OR 62: I-5 to Dutton Road Final Environmental Impact Statement and Record of Decision

OR 140 Corridor Plan: I-5 Exit 35 to Brownsboro-Eagle Point Road

2021-2045 Rogue Valley Metropolitan Planning Organization Regional Transportation Plan

Jackson County Transportation System Plan

TM #3: Environmental Features & Land Uses



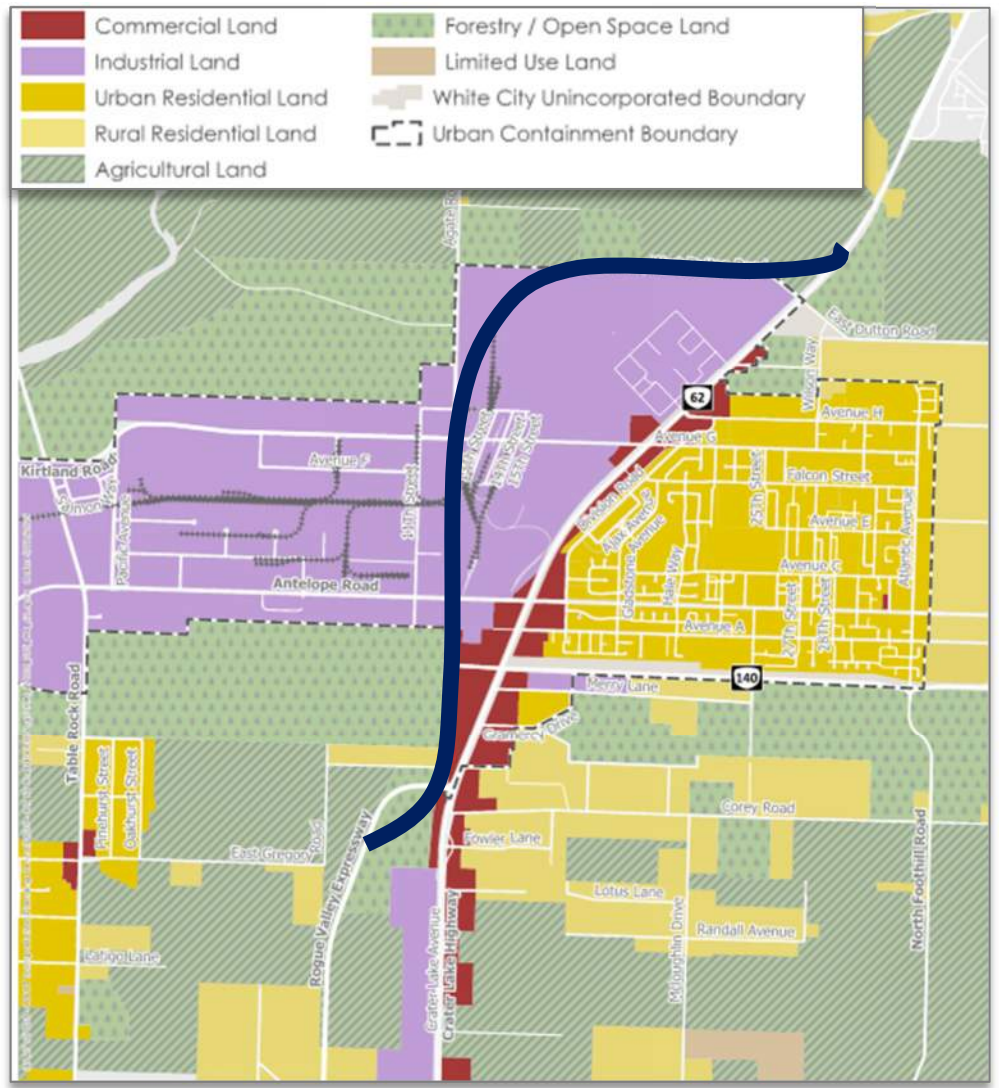
Identifies land use and zoning designations, activity centers, and developed / vacant lands



Inventories various environmental features within an Area of Potential Impact for the proposed expressway alignment

TM #3: Environmental Features & Land Uses

Land Use Designations

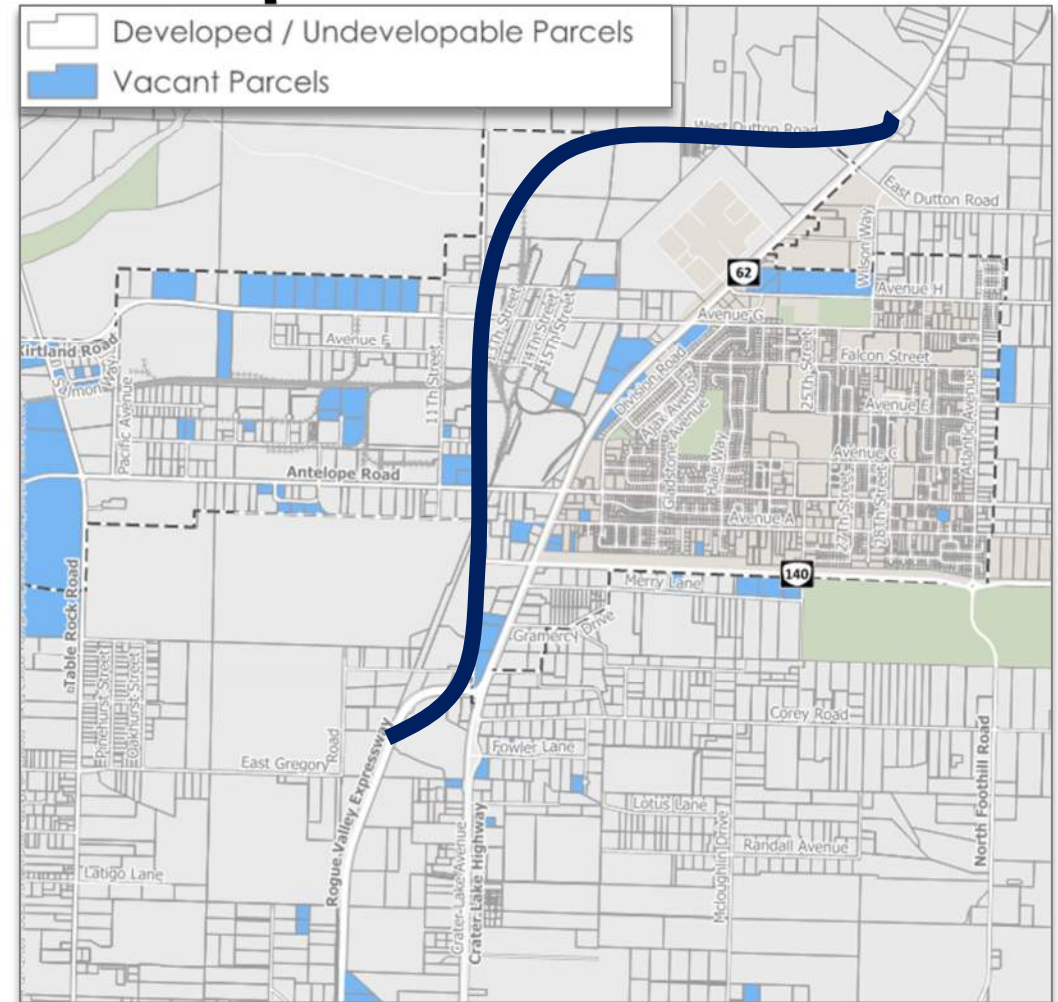


TM #3: Environmental Features & Land Uses

Key Activity Centers

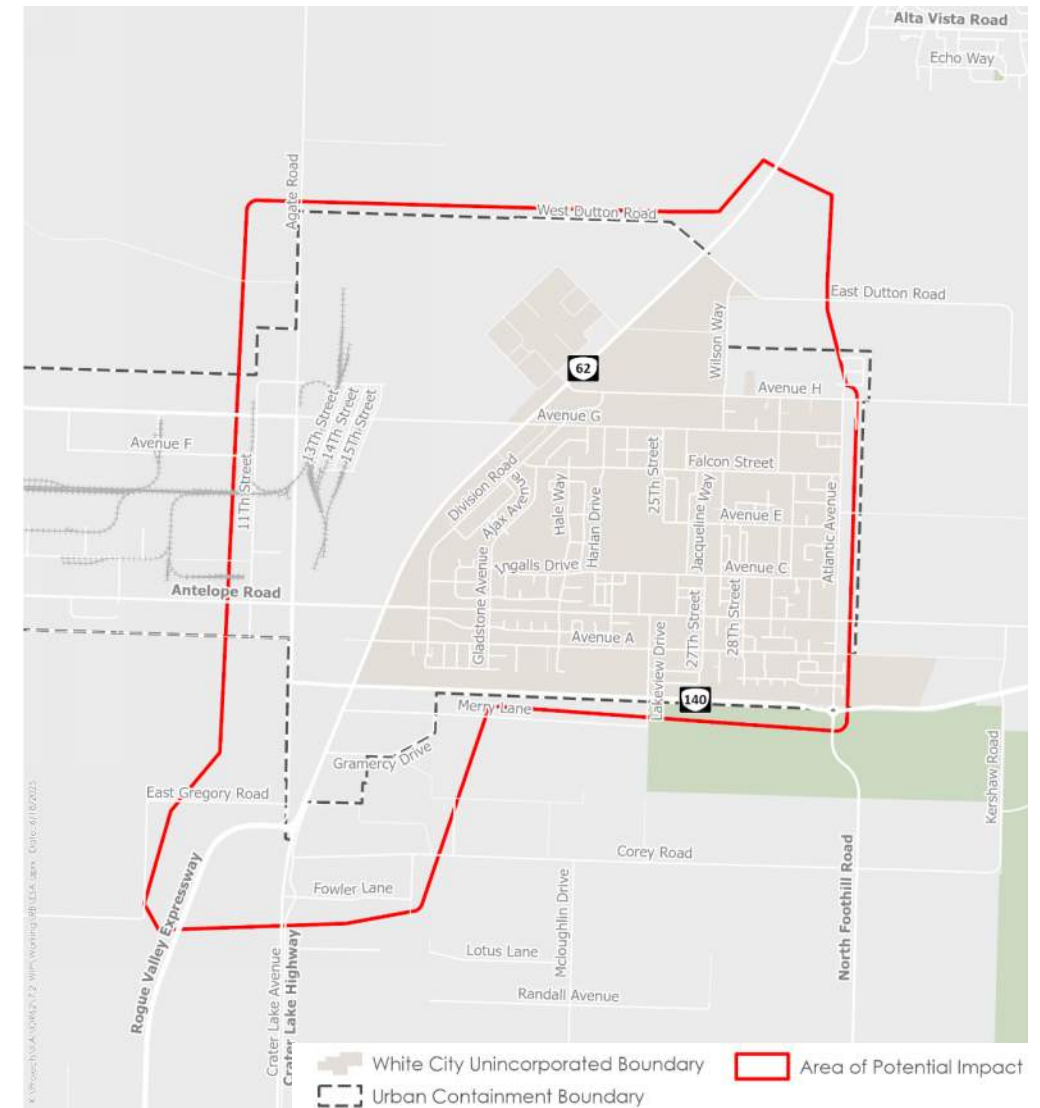


Developed and Vacant Land



TM #3: Environmental Features & Land Uses

- Desktop analyses of available information
- Focus on Project Area of Potential Impact
- EIS topics covered include:
 - Right-of-Way
 - Utilities
 - Sensitive Species and Habitats
 - Historically Underserved Populations
 - Socioeconomics
 - Section 4(f)
 - Land and Water Conservation Fund (LWCF) Act
 - Wetlands, Waters, and Water Quality
 - Cultural Resources
 - Geology
 - Hazardous Materials
 - Air Quality



TM #3: Environmental Features & Land Uses

Key Findings: not much has changed (except more development)

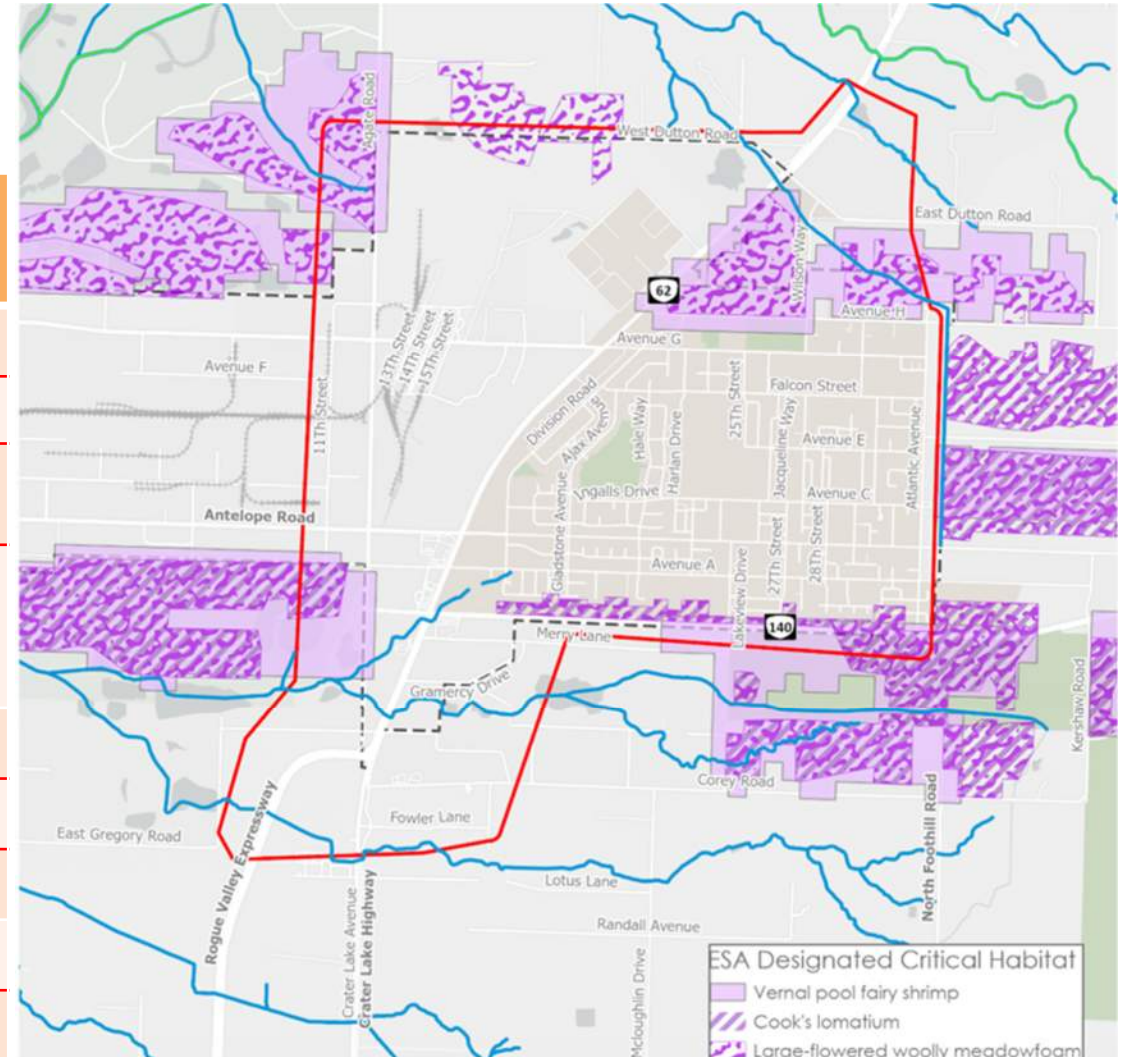
- ROW – new development and additional parcels created
- Historically Underserved Populations
 - Not possible to make direct comparison due to missing block groups
 - General decrease in low-income and increase in minority populations
- Socioeconomics
 - Change in business operations
 - Change in location of public services



TM #3: Environmental Features & Land Uses

Sensitive Species and Habitats

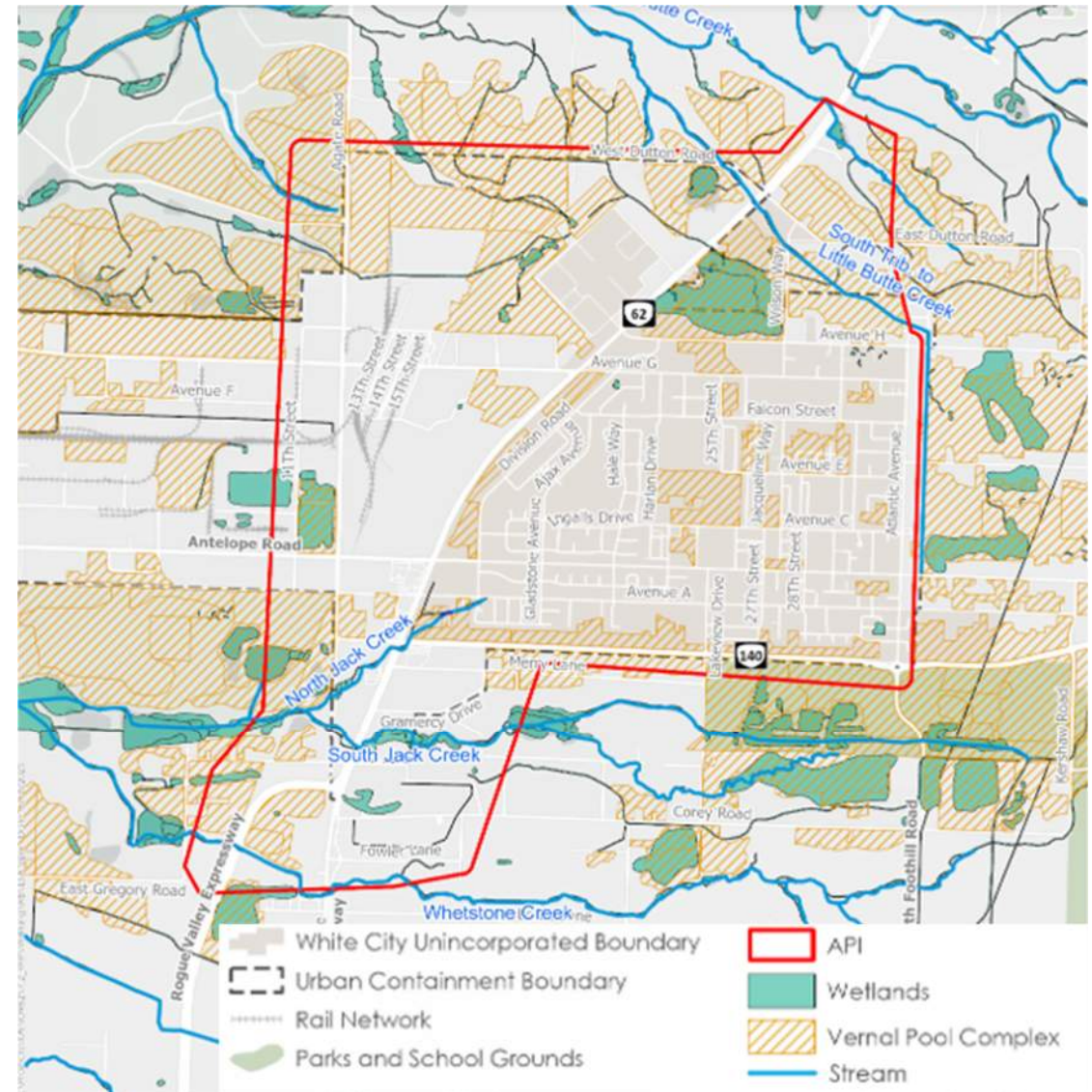
Species Name	Federal Status	State Status	Critical Habitat Designated within API	Species Potentially Occurs within API*	Change from FEIS
Vernal pool fairy shrimp	Threatened	Not listed	Yes	Yes	None
Cook's lomatium	Endangered	Endangered	Yes	Yes	None
Large-flowered woolly meadowfoam	Endangered	Endangered	Yes	Yes	None
Coho salmon	Threatened	Not Listed	No	No	No longer considered as potentially occurring within API
Northwestern pond turtle	Proposed threatened	Not listed	No	Yes	Was not considered in FEIS
Franklin's bumble bee	Endangered	Not listed	No	No	Was not considered in FEIS
Monarch butterfly	Proposed threatened	Not listed	No	Yes	Was not considered in FEIS
Suckley's cuckoo bumble bee	Proposed endangered	Not listed	No	Yes	Was not considered in FEIS
Gentner's fritillary	Endangered	Endangered	No	Yes	Was not considered in FEIS



TM #3: Environmental Features & Land Uses

Wetland and Waters

- No changes notes since the OR 62 EIS



TM #3: Environmental Features & Land Uses

- Section 4(f)
 - Denman Wildlife Area, Hoover Ponds County Park, and White City Splash Park and Community Skate Park are within the API
- Cultural
 - Two resources within API- Camp White Station Hospital and Cingcade Complex

Next Steps & Open Discussion

AC Review Comments | Existing Conditions Analysis | AC Meeting #2

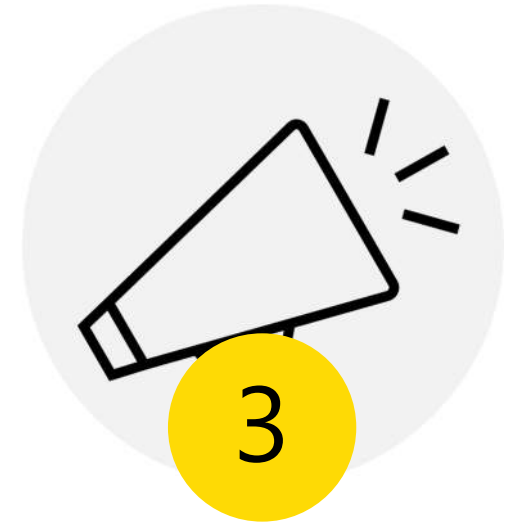
Next Steps & Open Discussion



AC to provide feedback on Tech Memos #1 and #3 by **July 10, 2025**



Project Team to begin Existing Conditions Analysis



Look out for **AC Meeting #2 in Fall 2025**

ODOT Project Website

